



Regina M Flanagan, PLA, ASLA, CLARB
Art • Landscape • Design LLC

1506 Osceola Avenue
Saint Paul, Minnesota 55105
regina@artlandscapedesign.us
651-587-0447 cell phone
artlandscapedesign.studio
reginaflanagan.photography
linkedin.com/in/reginaflanagan

Professional Experience

Licensed Landscape Architect
State of Minnesota #48952

Program Director

Project Manager

Writer, Researcher
and Educator

Blog and Web
Designer and
Content Author

Landscape Photographer
and Videographer

Strengths

Creative Problem Solving

Quality Design Work

Situation Analysis

Strategy, Policy
and Procedures
Formulation

Meeting Leadership

Innovative Techniques
for Public Participation

Working with Diverse
Communities

Skilled Written, Verbal,
Visual and Online
Communications

Education

MLA, Landscape Architecture, College of Design, University of Minnesota
BS and MA, Fine Art, University of Wisconsin-Madison

Professional Experience

Landscape Architecture, Public Art Services, Photography, Writing.

Independent Consultant: Art • Landscape • Design LLC, Saint Paul, Minnesota.
1994-present. (Minnesota licensed landscape architect since 2011.)

Landscape Designer and Project Manager. HNTB Corporation Architects
and Engineers. Minneapolis, Minnesota. 2007-2010.

Teacher, Landscape Photography. Penland School of Crafts, Penland, North Carolina.
1999, 2001 & 2006.

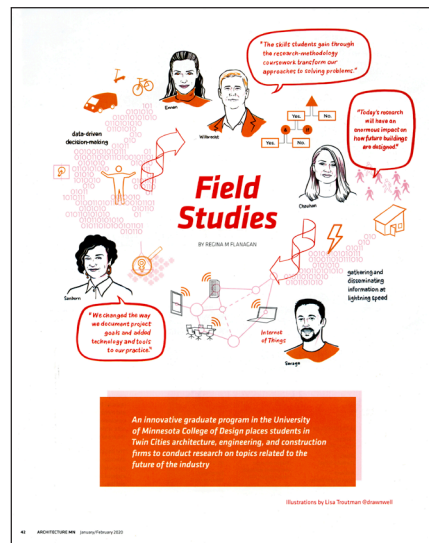
Program Associate, Art in Public Places Program. Minnesota State Arts Board,
Saint Paul, Minnesota. 1988-1998.

Coordinator, Percent for Art Program. Wisconsin Arts Board, Madison, Wisconsin.
1981-1988.

Fine Art Photographer. reginaflanagan.photography 1977- present.

Featured Project –

Field Studies, Architecture MN, Jan-Feb 2020



We owe a debt of gratitude to writer Regina M Flanagan, who waded into some intellectual topics and conducted numerous interviews for her feature on an innovative graduate program in the University of Minnesota School of Architecture. The program powers leading-edge research endeavors in Minnesota architecture and construction firms, and we couldn't be happier with the way Regina translated the heady subject matter for a general audience.

– Christopher Hudson, Editor

Selected Accomplishments

Public Engagement, Planning, Design Guidelines

- **Cass Avenue Bridge Public Art, Detroit Michigan.** (With HNTB Corporation). Client: Michigan Department of Transportation. 2019-present.
- **Hillcrest Master Plan, City of Saint Paul, Minnesota.** (With Cunningham Group). Client: City of Saint Paul Planning and Economic Development. 2019-2022.
- **South Loop Master Plan, City of Bloomington, Minnesota.** Streetscape master plan and preliminary design featuring integrated public art for area south of I-494 and east of the Mall of America. Client: City of Bloomington, Minnesota, 2013. (With Kimley Horn & SRF.)

Public Engagement, Planning, Design Guidelines *(continued)*

- **I-94 Rehabilitation Design Guidelines, Detroit, Michigan.** Expresses community themes in roadway elements: bridges, walls, landscaping and public art. Client: Michigan Department of Transportation, 2009-2010. (With HNTB.)
- **Aesthetic Design Guide, Blue Water Bridge, Port Huron, Michigan.** Context Sensitive Solutions (CSS) process including design options for international border crossing and the I-94/I-69 corridor. Client: Michigan Department of Transportation. 2009-2010. (With HNTB.)
- **Milwaukee Central Business District Public Art & Design Study 2004.** Urban design inventory and analysis identifying concepts and examples for three downtown streetscape corridors; administration of committees; competition and design process; and demonstration project by artist Janet Zweig. Client: Department of Public Works, City of Milwaukee, Wisconsin, 2003-2007.
- **Western Park Area Neighborhood Assessment, Saint Paul, Minnesota 2004.** Comprehensive urban design and landscape evaluation of the physical, social and economic impact of Western Sculpture Park on the diverse Frogtown neighborhood and how this asset could be better utilized by the community. Clients: Public Art Saint Paul and The Saint Paul Companies, 2002-2004.

Program Development and Project Management

- **Public Art Ordinance Program, City of Saint Paul, Minnesota.** Program development and administration; authored Guidelines, Technical Manual and Public Art Ideas List (PAIL) available online www.stpaul.gov/publicart Consultancy funded by Public Art Saint Paul, a private non-profit organization. 2011- 2017.
- **Public Art for the Bagley Pedestrian Bridge, Detroit, Michigan.** Project management of all phases of art commission by artist Hubert Massey for bridge linking neighborhoods in Mexicantown across I-75/I-96 corridor as part of the Ambassador Bridge Gateway Mega-Project. Client: Michigan Department of Transportation, 2009-2010. (With HNTB.)
- **The Public Art Framework and Field Guide for Madison, Wisconsin, 2001.** Policies and procedures for identifying, funding and administering projects with neighborhood and city-wide impact. Client: Madison Arts Commission and Department of Planning and Economic Development, Madison, Wisconsin, 2000-2001 and continuing as an advisor.
- Established and directed public art programs for the **State of Wisconsin** and the **State of Minnesota**. Administered over 135 projects for colleges and universities, state parks, and other facilities including the Minnesota History Center and the Minnesota Judicial Center. Clients: state departments and agencies, 1981-1998.

Site Design and Planting Design

- **Belwin Creative Center Conceptual Master Plan, Afton, Minnesota 2017.** 300-acre wetland and oak savanna landscape for use as a center for art and nature experiences. Client: Belwin Conservancy. (With Jim Hagstrom, Savanna Designs.)
- **Monroe (Wisconsin) Arts Center.** Proscenium Courtyards connecting historic building and new addition; hardscape including limestone seat walls, landscaping. Sculpture Garden with plantings. Client: Monroe Arts Center, Monroe, Wisconsin, 2016-2017.
- **Discovery Garden at Alpine Park.** Three-acre playground with an environmental emphasis. Featured in *You are here, exploring Art in the Suburbs* published by the McKnight Foundation and FORECAST Public Artworks. Client: City of Ramsey, Minnesota, 2003-2005.
- **American Swedish Institute Festival Gardens and Grounds.** Display gardens around the historic Turnblad Mansion. Honored with a first-place Minneapolis Blooms Award in 2005. Client: The American Swedish Institute, Minneapolis, Minnesota, 2002 & 2006.

Professional Service

Vice-Chair and Chair. State Designer Selection Board. State of Minnesota. 2014-2018.

Education Committee and Panelist. Minnesota Chapter American Society of Landscape Architects Annual Conference. 2012, 2017 and 2018.

Advisory Committee. Beerline Trail Neighborhood Development Initiative, Neighborhood Centric Park Design, Milwaukee, Wisconsin. Selected designer Walter Hood for project. 2016-ongoing.

Professional Service *(continued)*

Field Session and Tour Leader. American Society of Landscape Architects (ASLA) Annual Meeting, Minneapolis, Minnesota. "Art of the Public Realm." 2006.

Advisory Board and Contributing Writer. *_SCAPE* magazine of Minnesota Chapter of American Society of Landscape Architects. 2005 - 2008.

Board member. FORECAST Public Artworks, Saint Paul, Minnesota. 2001-2005

Editorial Board. *Public Art Review*, Saint Paul, Minnesota. 1989-1997.

Honors and Awards

Grants - Minnesota State Arts Board. Artists Initiative, Landscape Photography, 2014 and 2020.

Finalist - Minnesota Military Families Tribute Memorial, State Capitol Mall, Saint Paul, MN, 2010.

Outstanding Planning Award - North Carolina Chapter of the American Planning Association. Triangle Expressway Aesthetic Design Guidelines, North Carolina Turnpike Authority, Raleigh, NC, 2007

Silver Award of Excellence for Best Technical Article - Minnesota Magazine Publishers Association for a Continuing Education essay with quiz for architects. *Fabric Architecture*, 2005.

First Place Minneapolis Blooms Award - City of Minneapolis Committee on the Urban Environment for The American Swedish Institute Festival Gardens, 2005.

Sigma Lambda Alpha Honor Society - Eta Chapter for Landscape Architecture, 2000.

Residency - Blacklock Nature Sanctuary, Mooselake MN. Fellowship, 1997.

Grant - Center for Arts Criticism, Saint Paul. Travel Study, 1994.

Special Award - Minnesota American Institute of Architects for exceptional contribution to the quality of the physical environment and architecture, 1994.

Writing and Research (Selected)

2015 - Website and Blog: Nicollet Mall Public Art, Culture and Public Process. nicolletmallart.org

2018 - Original stories, opinion pieces, interviews, photo essays and videos. Client: Public Art Program, Minneapolis Community Planning & Economic Development. 2015-2018.

2014 - *Artistic Significance Report - Public Art for The New Nicollet Mall 1986-1992*. Client: Public Art Program, Minneapolis Community Planning & Economic Development. 2014.

2011 - Paper entitled "The Ambassador Bridge Gateway Public Art Project Case Study: Connecting Neighbors Through Public Art" by Eric Polvi, Andrew Zeigler and Regina Flanagan chosen by the Transportation Research Board, Washington, DC for 2011 conference and subsequent publication.

2008 - Essay "The Millennium Park Effect: A Tale of Two Cities" published in 2008 by Routledge USA in textbook entitled **The Practice of Public Art** edited by Cameron Chartiere and Shelly Willis, pp. 133-151.

Bibliography - Published Articles (Selected)

"Field Studies, An innovative graduate program at the University of Minnesota College of Design places students in Twin Cities architecture, engineering and construction firms to conduct research on topics related to the future of the industry." *Architecture Minnesota*. (January/February 2020): 42:45.

"Listening to the Deaf, How can a building be designed to serve the unique needs of Deaf people? A new residence hall at the Minnesota State Academy for the Deaf showcases the answers." *Architecture Minnesota*. (November/December 2019): 46-51, 63.

"Rhythm as Form, Rhythm as Place, In her site-specific artwork, Athena Tacha has explored a distinctive vocabulary of forms in great depth." *Landscape Architecture*, vol. 97, no. 3 (March 2007): 72, 74-79.

"The 21st Century's smartest fabrics, Engineered textiles tackle energy issues in landscape architecture." *Fabric Architecture*, vol. 18, no. 5 (September/October 2006): 46-49.

"Working with Artists, How landscape architects can best choose artists to collaborate with them on projects." *Landscape Architecture*, vol. 95, no. 6 (June 2005): 88, 92-97.

"Landscape Sculptor, Trained as a landscape architect and an artist, Brad Goldberg has produced a significant body of urban work." *Landscape Architecture*, vol. 96, no. 8 (August 2006): 64, 66-70.

Bibliography - Published Articles *(continued)*

- "Over Under Around Through, Art along the new LRT line." *_SCAPE*, Issue #2 (Summer 2005): 8-13.
- "Artists and architects, launching a working relationship." *Fabric Architecture*, vol. 17, no. 4 (July-August 2005): 26-31. (Silver Award from the Minnesota Magazine Publishers Association, 2005.)
- "The Gates Journal." *Public Art Review*, vol. 16, no.2 (Spring-Summer 2005): 50-52.
- "Artfully Green; Artist/engineer Viet Ngo is cleaning up wastewater facilities around the globe using natural biological processes, and leaving works of art in their place." *Fabric Architecture*, (July/August 2004): 24-26.
- "Arts Towns, Our Towns." *Architecture Minnesota*, vol. 29, no. 6 (November-December 2003): 56-59, 66-67.
- "That Beauty Problem - Four Artists on "Beauty" in Public Art." *Public Art Review*, vol. 6 (Fall-Winter 1994): 39-41.
- Public Radio International (PRI) Living on Earth segment. Reading of original essay "The Lunch Tree" and interview; broadcast on July 29, 2016 and August 17, 2018. <http://www.loe.org/shows/segments.html?programID=16-P13-00031&segmentID=6>

Landscape Photography Exhibition Record (Selected)**Solo Shows**

- 2019 Minnesota Valley National Wildlife Refuge Visitor Center, Bloomington, MN - "What Makes a Landscape Beautiful?"
- 2016 College of Design Library, University of Minnesota, Minneapolis, MN - "The Beauty that Requires Health: Four Landscapes" photographs and short film
- 2015 Phipps Center for the Arts, Hudson, WI - "Disturbed Landscapes"
- 2005 Unity Unitarian Society, Saint Paul, MN - "Where we find ourselves"
- 1996 New York Mills Regional Cultural Center, New York Mills, MN - "Let Us Show You The Unusual"
- 1995 Conkling Gallery, Mankato State University, Mankato, MN - "You Can Always See the Obvious"
- 1986 Wisconsin Academy of Science, Arts and Letters, Madison, WI - "Grace"
- 1984 Madison Museum of Contemporary Art, Madison, WI - "Elysian Plain"

Group Shows and Juried Exhibitions

- 2021 Minnesota Museum of American Art, Saint Paul - "Many Waters: A Minnesota Biennial"
- 2020 New Visions Gallery Marshfield (WI) Clinic- "Culture & Agriculture"
- 2017 Minnesota State Fair - 106th Annual Fine Arts Exhibition
- 2016 Minnetonka Center for the Arts, Wayzata, MN - "A Sense of Place"
- 2016 Monroe Arts Center, Monroe, WI - "A Sense of Place: Wisconsin Landscape Photographs"
- 2014 Minnesota State Arts Board, St. Paul, MN - "Perspectives"
- 2013 AZ Gallery, Saint Paul, MN - Third Annual Lowertown Art Show (Judge's Choice)
- 2009 Bloomington (MN) Art Center - 33rd Annual Members Exhibition (Award)
- 2003 Minnesota Center for Photography, Minneapolis, MN - "Photo Bravo 10"
- 2002 Rochester Art Center, Rochester, MN - "9/11"
- 1992 University of Wisconsin-Whitewater - "Color Photography Invitational"
- 1992 Minnesota State Fair - 81st Annual Fine Arts Exhibition
- 1991 Society for Contemporary Photography, Kansas City, MO - "Current Work '91"
- 1991 WARM Gallery 12th Annual Exhibition, Minneapolis, MN (Juror Award)
- 1987-1988 University of New Mexico, Las Cruces - "American Color" (travelling)
- 1986-1988 Midwest Photography Invitational IV, Green Bay, WI (travelling)
- 1987 Wustum Museum of Art, Racine, WI - "Wisconsin Photography '87"
- 1986 University of Wisconsin-Milwaukee - "Response '86"
- 1985 University of Wisconsin-Milwaukee - "Color Photography: New Work"
- 1984 Madison Art Center, Madison, WI - Biennial Exhibit of Wisconsin Artists
- 1982 Milwaukee Art Museum, Cudahy Gallery - "Wisconsin Trends"
- 1982 Central Washington State University, Ellensburg, WA - (4 person)
- 1981 Wustum Museum of Art, Racine, WI - "Wisconsin Photography '81"
- 1977 MAMA Gallery 853, Madison, WI - "Madison Area Photographers Show"

Collections

- ERDMAN, Madison, Wisconsin (medical clinics nationwide)
- Madison Museum of Contemporary Art, Madison, Wisconsin
- Miller Brewing Company, Milwaukee, Wisconsin
- Minnesota Historical Society, Saint Paul, Minnesota
- Monroe Arts Center, Monroe, Wisconsin
- US Bank Collection, Minneapolis, Minnesota